

4040(35)s10

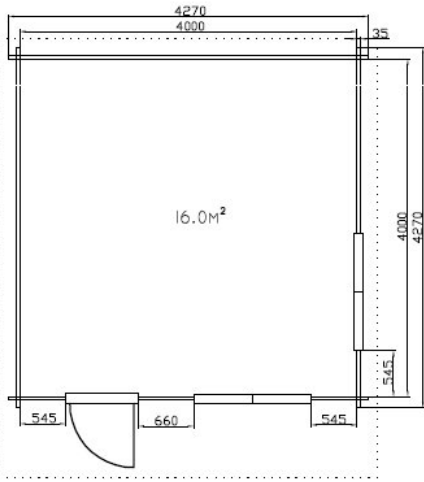
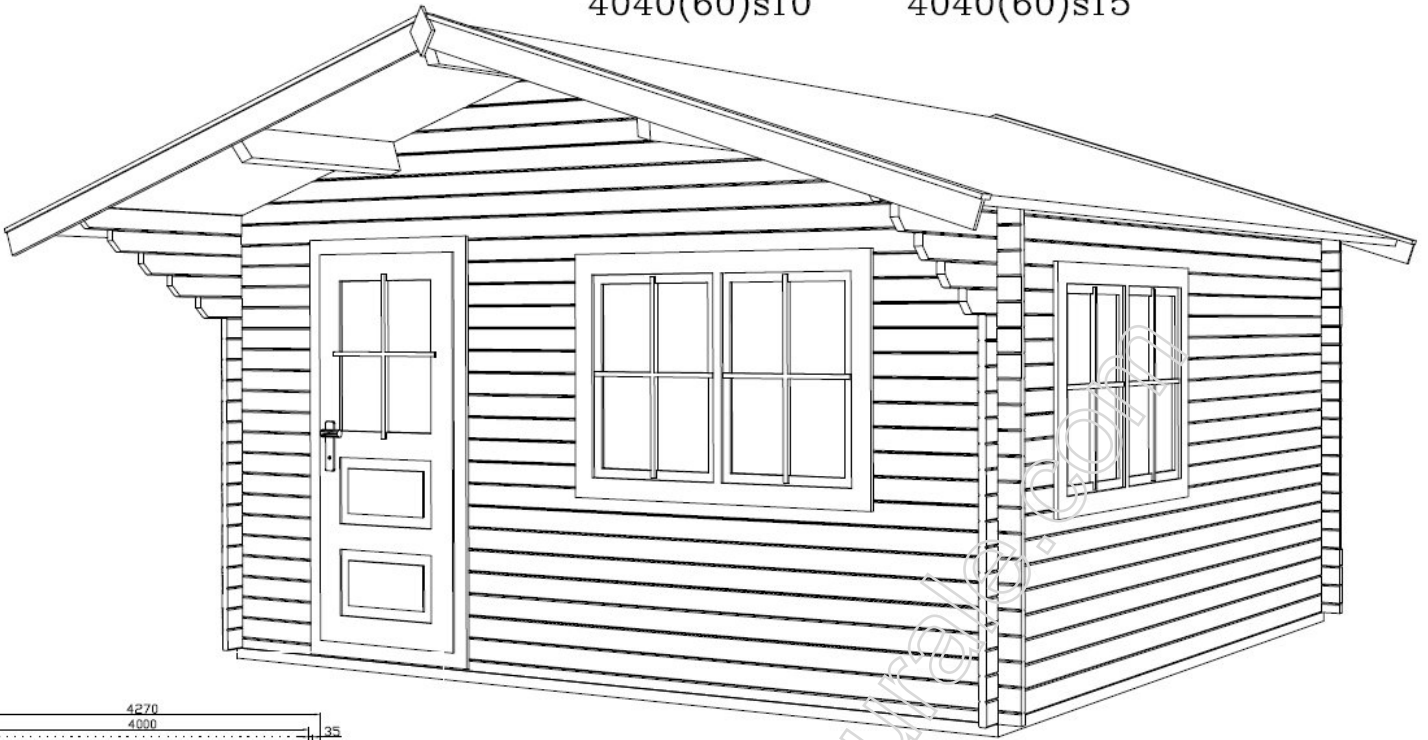
4040(35)s15

4040(44)s10

4040(44)s15

4040(60)s10

4040(60)s15



Garden house 4,00\*4,00m(16m<sup>2</sup>) + roof 1,00m(1.50m). Wall thickness 35, 44, 60mm with double plank profile from pine or fir wood.

All wooden constructions are dried until 10–12%, without painting and impregnation.

Door with glass and lock, windows with glass with simple opening system.

Other technical data:

- floor planks 22mm
- underground 100\*40, 50\*40mm
- roof planks 19mm
- rafter 140\*60mm

Wall height: 2,10m

House height: 2,77m

Other modifications:

4040(35)Ls10

4040(44)Ls10

4040(60)Ls10

4040(35)v15

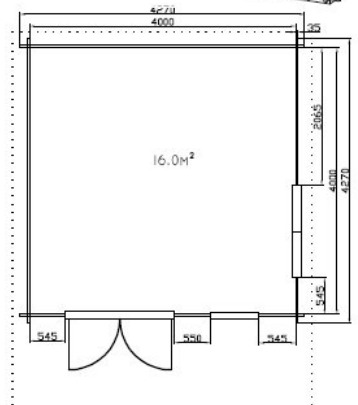
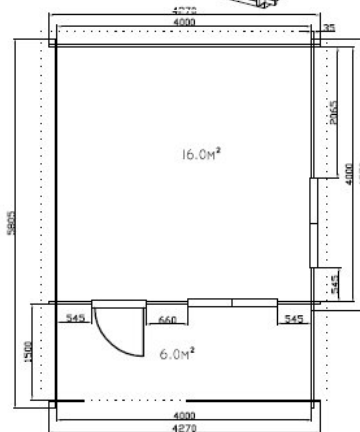
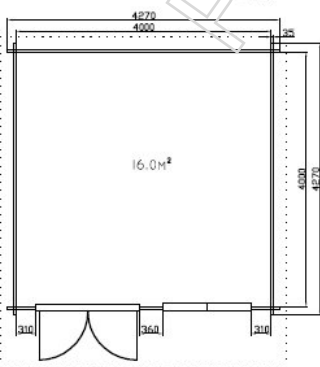
4040(44)v15

4040(60)v15

4040(35)L2s10

4040(44)L2s10

4040(60)L2s10



Garden house 4,00\*4,00m(16m<sup>2</sup>) + roof 1,00m with double door.

Garden house 4,00\*4,00m(16m<sup>2</sup>) + roof 1,50m and veranda 1.5m(6m<sup>2</sup>).

Garden house 4,00\*4,00m(16m<sup>2</sup>) + roof 1,00m with double door.