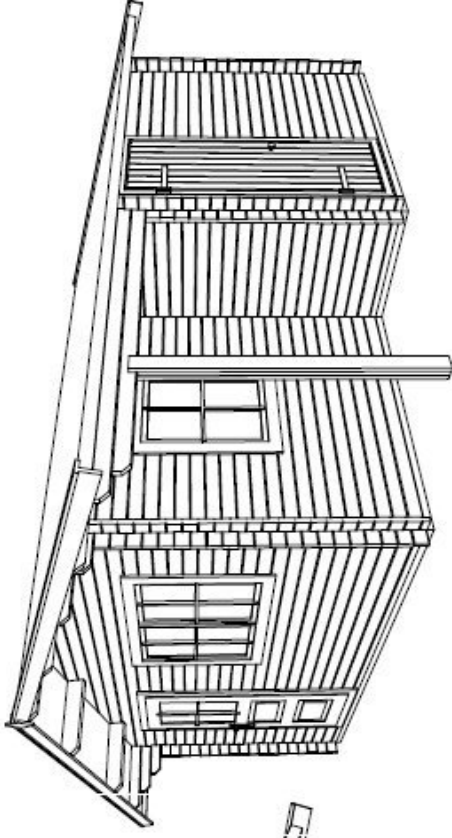
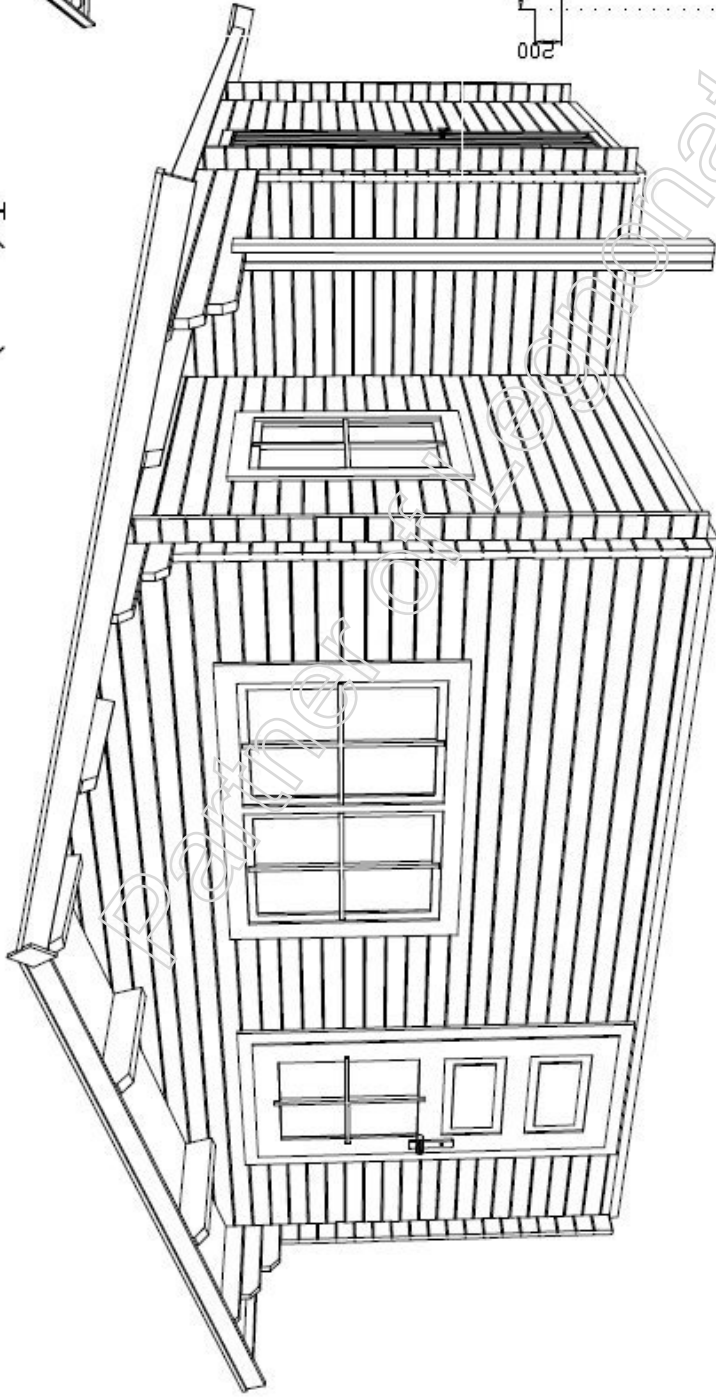


5040(44)pbs6



Garden house 5.00*4,00 m + roof 0,6m. Wall thickness 44mm with double plank profile from pine or fir wood.

All wooden constructions are dried until 10–12%, without painting and impregnation.

Door with glass and lock, windows with glass with simple opening system.

Wall height 2.13m

All height 2.78m

Other technical data:

- floor planks 22mm
- underground 100*40, 50*40mm
- roof planks 19mm
- rafter 140*60mm

